



TORNADO'S EYE

DAVID EISELE



This document is intended to provide the venue with all the information it needs to prepare for the technical requirements in advance. Please ensure you provide all the equipment listed on the following pages, or equivalent. If any changes should occur, please get in touch with us directly. Otherwise, we will assume that everything is ready as specified in the rider before load-in. Please ensure, that all Lights are rigged and the sound system is ready to use by get -In.

TRAVEL PARTY:

PERFORMER: 1

TECHNICIAN: 1

DURATION:

APPROX. 50MIN

NO BREAKS

5H PREP-TIME

CONTACT

ARTISTIC DIRECTOR:

DAVID EISELE

+4915775283317

info@davideisele.com

TECHNICIAN:

STEFFEN MELCH

+49 1747532600

melchsteffen@mailbox.org

General Information:

Tornados Eye (TE) is a solo **INDOOR** performance with a duration of 50 minutes. It needs a calm and focused surrounding preferably completely dark. The show is created for frontal or 3/4 audiences. If the stage is fully surrounded it needs to be precisely discussed beforehand T.E. is without language T.E. is recommended for audience with age 6+.

TIME SCHEDULE: *Assuming that lighting is rigged and audio setup ready to use.*

LOAD IN	13::00
LIGHT CORRECTIONS AND FOCUS	13:30 -15:30
BUILD UP SET	15:30 - 16:30
PROGRAMMING/SOUND CHECK/ REHEARSAL	16:30 - 18:30
DINNER	18:30
SHOW	20:00
BUILD DOWN	21:30
LOAD OUT	22:30

CREW:

TECHNICIANS/HANDS	PROVIDED BY THEATRE - 1X SOUND TECHNICIAN - 1X LIGHTTECHNICIANS or at least 1 technician for both
NOTE	If the build up or down right before or after the show is supposed to be fast, some stage hands are needed which need to be introduced to their jobs beforehand. A person with full technical know how about the sound and lights of the venue needs to be available at any point during the presence of the T.E. crew

SAFETY

GLASS	In a „Worst case scenario“ there might be some glass braking during the show. For this case a set of suiting cleaning equipment needs to be ready at the side at all times provided by the venue.
CANDLE	There is a real CANDLE being used in the show. During the last scene its standing calmly on a table after being lit up with matches. Please take this into account if you have a sensitive fire alarm or regulations.

INPUTS

1/2	MINIJACK -> STEREO XLR	QLAB	FOH	MINIJACK	
3	XLR	LAVALLIER	STAGE	Sennheiser XSW 2-ME2 E-Band Lapel Set	821-832 MHz and 863-865 MHz
4	D.I (BSS or equal)	CELLO	STAGE	Sennheiser XSW-D Instrument Base Set	2400 MHz – 2483.5 Mhz

OUTPUTS

P.A.	FRONT L/R
M.A.	L/R

STAGE

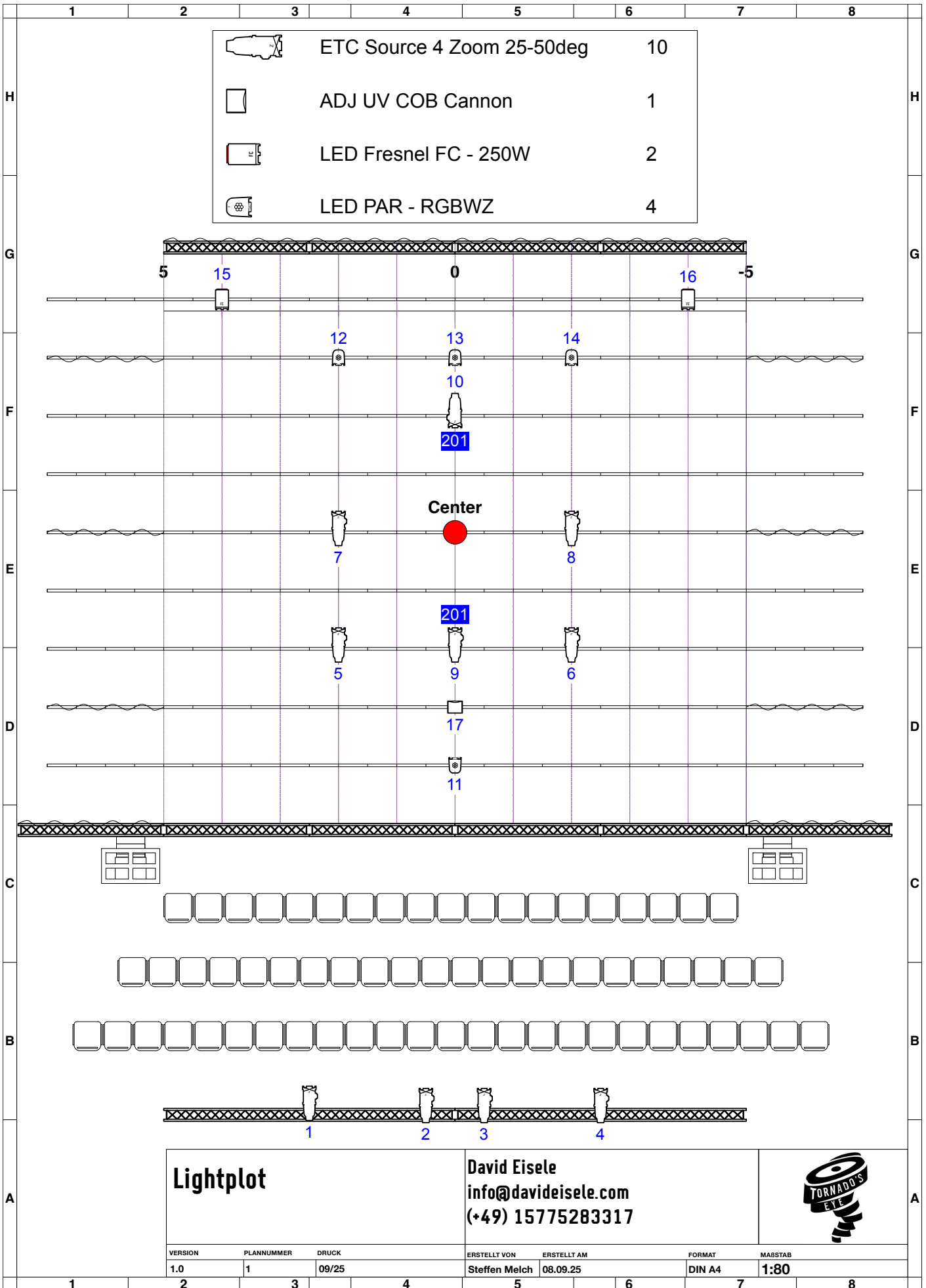
MINIMUM SIZE	7m x 7m x 5m
BEST SIZE	10m x 8m x 6m
STAGE CONDITION	levelled, flat and free of any irregularities
STAGE SURFACE	Black dance floor -> https://www.gerriets.com/de/shop/tanzboden-vario-pro-1.2-1731002013/
AUDIENCE	Frontal or 3/4 Audience

BACKSTAGE

BASIC	Within one minute walking distance to the stage there needs to be a dressing room with the least basic setup: a Table, a chair, a mirror, a toilet and a sink with water.
-------	--

LIGHT:

LIGHTINSTRUMENTS	PROVIDED BY THEATRE - AS IN PLAN OR EQUAL
COB UV CANNON	PROVIDED BY COMPANY - FID17
LIGHT DESK	PROVIDED BY COMPANY
FILTER	PROVIDED BY COMPANY
SIGNAL LINE	PROVIDED BY THEATRE - 1 UNI PHYSICAL XLR
SFX - HAZER	PROVIDED BY THEATRE - No Fog-Machine !



Website / Facebook / Social media

www.tornadoseye.com

https://www.instagram.com/d_a_v_i_d_eisele/

https://www.facebook.com/2127558577510465?ref=embed_page

Trailer

<https://youtu.be/LYN1xq--1mw>

Contact

info@davideisele.com